

# COMATRA CMTX-V10 Blue Safety LED

**“The Comatra V10 series, the Heavy-Duty choice !”**



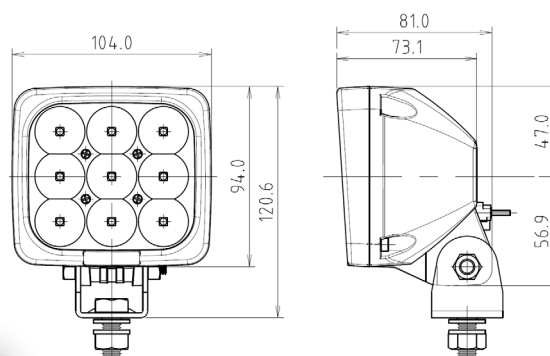
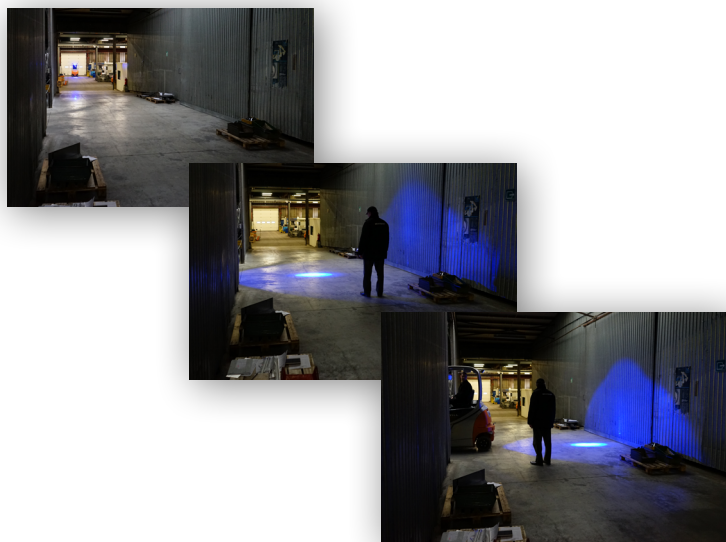
In today's warehouses **forklifts and employees are working** more and more in conjunction and in **stressful situations or loud environments**.

Our **CMTX-V10 forklift approaching blue safety – warning light** is a useful **visual warning system** that will contribute to **increase safety** for pedestrians.

Will **optimize safety** with several forklifts circulating in **areas with restricted visibilities** drastically **reducing the risks of collisions, workplace accidents and near misses**.

## **Technical specs CMTX-V10 Blue LED**

- maintenance free up to 20.000 hours
- IP68
- 11-100 V DC (Amp draw @ 12V : 1.55 A / 18.6W)
- Pre-wired 1.0 m cable with Deutsch® connector included



1000mm cable with  
Deutsch® connector

See it in action on YouTube : 